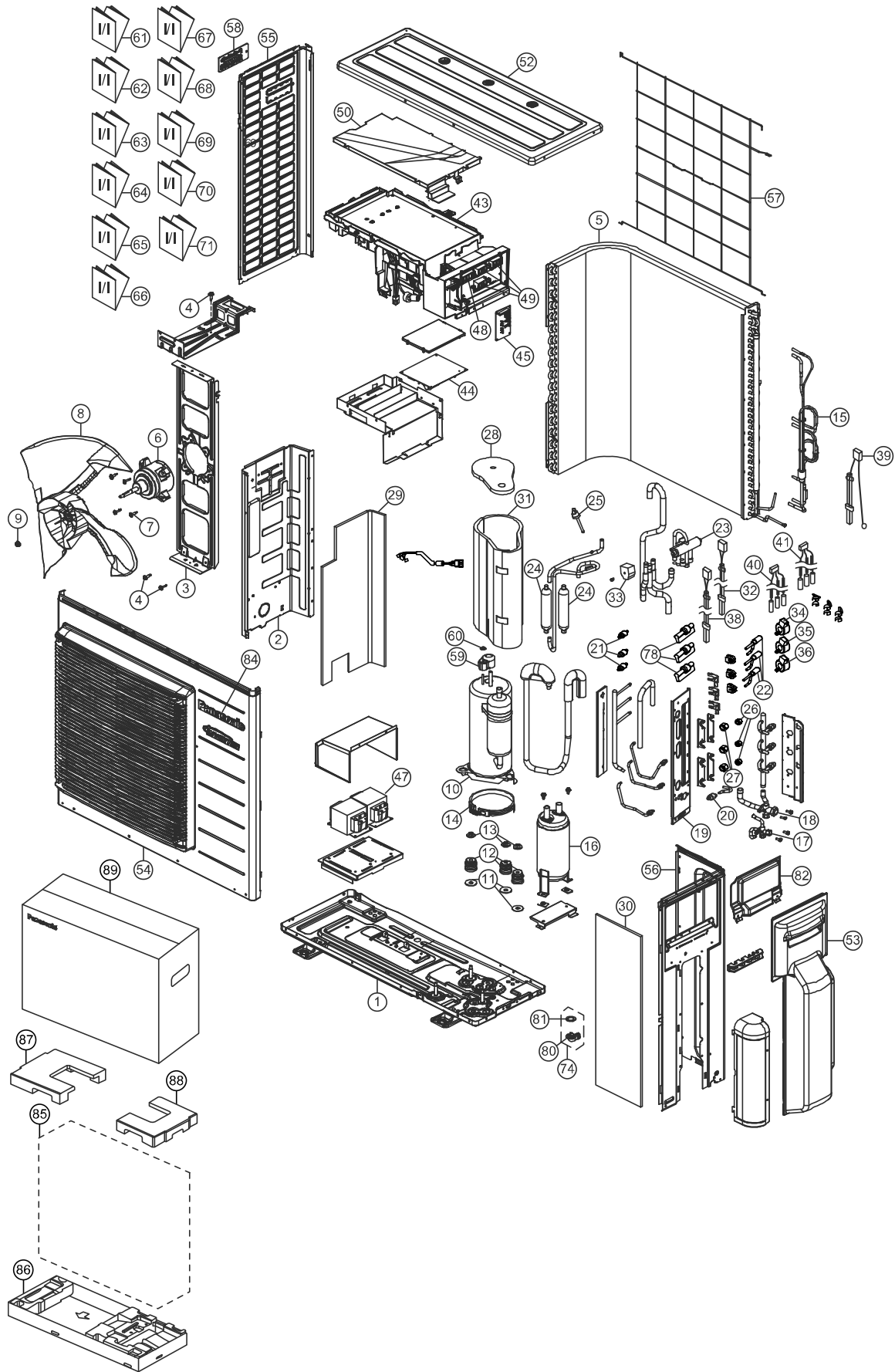


## 20. Exploded View and Replacement Parts List



**Note**  
 The above exploded view is for the purpose of parts disassembly and replacement.  
 The non-numbered parts are not kept as standard service parts.

SAFETY	NO.	DESCRIPTION & NAME	Q'TY	CU-3TZ52TBE	REMARK
	1	CHASSIS ASSY	1	CWD52K1212	
	2	SOUND PROOF BOARD	1	CWH151194	
	3	FAN MOTOR BRACKET	1	CWD541127	
	4	SCREW - BRACKET FAN MOTOR	2	CWH551217	
	5	CONDENSER COMPLETE	1	CWB32C2680	
⚠	6	FAN MOTOR, DC 60W 3PH	1	EHDS80C60AC	O
	7	SCREW - FAN MOTOR MOUNT	4	CWH551323	
	8	PROPELLER FAN ASSY	1	CWH00K1006	
	9	NUT	1	CWH561092	
⚠	10	COMPRESSOR	1	9KD184XAA21	O
	11	PACKING	3	CWB81043	
	12	BUSHING - COMPRESSOR MOUNT	3	CWH50055	
	13	NUT - COMPRESSOR MOUNT	3	CWH561049	
	14	CRANKCASE HEATER	1	CWA341047	
	15	TUBE ASSY (CAPILLARY TUBE)	1	CWT01C4955	
	16	ACCUMULATOR	1	CWB131050	
	17	3 - WAY VALVE	1	CWB011601	O
	18	3 - WAY VALVE	1	CWB011602	O
	19	HOLDER COUPLING	1	CWH351258	
	20	STRAINER	1	CWB11061	
	21	STRAINER	3	CWB111024	
	22	EXPANSION VALVE	3	CWB051029	O
	23	4 - WAYS VALVE	1	CWB001026J	O
	24	DISCHARGE MUFFLER (4 W. VALVE)	2	ACXB12-00650	
	25	HEATING PRESSURE SWITCH	1	CWA101013	
	26	FLARE NUT (1/4)	3	CWT251030	
	27	FLARE NUT (3/8)	3	CWT251031	
	28	SOUND PROOF MATERIAL	1	CWG302246	
	29	SOUND PROOR MATERIAL	1	CWG302520	
	30	SOUND PROOR MATERIAL	1	CWG302521	
	31	SOUND PROOR MATERIAL	1	CWG302522	
	32	SENSOR COMPLETE - (CN-DIS)	1	CWA50C2515	O
⚠	33	V - COIL COMPLETE (4 - WAY VALVE)	1	CWA43C2169J	O
⚠	34	V - COIL COMPLETE (E/VALVE - WHITE)	1	CWA43C2334	O
⚠	35	V - COIL COMPLETE (E/VALVE - YELLOW)	1	CWA43C2335	O
⚠	36	V - COIL COMPLETE (E/VALVE - BLUE)	1	CWA43C2336	O
	38	SENSOR - COMPLETE - DEF (CN-TH2)	1	CWA50C2625	O
	39	SENSOR - COMPLETE - OUTLET TEMP SENSOR	1	CWA50C2517	O
	40	SENSOR - COMPLETE (CN-TH4)	1	CWA50C2620	O
	41	SENSOR - COMPLETE (CN-TH3)	1	CWA50C2622	O
⚠	43	ELECTRONIC CONTROLLER	1	ACXA73C42180R	O
⚠	44	ELECT CONTROLLER - NOISE FILTER	1	ACXA73-07870	O
⚠	45	ELECT CONTROLLER (DISPLAY)	1	CWA745292	O
⚠	47	REACTOR	2	G0C403J00002	O
⚠	48	TERMINAL BOARD ASSY	1	CWA28K1195	O

SAFETY	NO.	DESCRIPTION & NAME	Q'TY	CU-3TZ52TBE	REMARK
	49	TERMINAL BOARD ASSY	3	CWA28K1196	O
	50	CONTROL BOARD COVER	1	CWH131333	
	52	CABINET TOP PLATE	1	CWE031083A	
	53	CONTROL BOARD COVER	1	CWH13C1194	
	54	CABINET FRONT PLATE	1	CWE06K1065	
	55	CABINET SIDE PLATE	1	CWE041317A	
	56	CABINET SIDE PLATE	1	CWE041395A	
	57	WIRE NET	1	CWD041128A	
	58	HANDLE	1	CWE161010	
	59	TERMINAL COVER	1	CWH171035	
	60	NUT - TERMINAL COVER	1	CWH7080300J	
	61	INSTALLATION INSTRUCTION	1	ACXF60-27240	
	62	INSTALLATION INSTRUCTION	1	ACXF60-27250	
	63	INSTALLATION INSTRUCTION	1	ACXF60-27260	
	64	INSTALLATION INSTRUCTION	1	ACXF60-27270	
	65	INSTALLATION INSTRUCTION	1	ACXF60-27280	
	66	INSTALLATION INSTRUCTION	1	ACXF60-27290	
	67	INSTALLATION INSTRUCTION	1	ACXF60-27300	
	68	INSTALLATION INSTRUCTION	1	ACXF60-27310	
	69	INSTALLATION INSTRUCTION	1	ACXF60-27320	
	70	INSTALLATION INSTRUCTION	1	ACXF60-27330	
	71	INSTALLATION INSTRUCTION	1	ACXF60-27340	
	74	ACCESSORY CO. (DRAIN ELBOW)	1	CWG87C900	
	78	DISCHARGE MUFFLER	3	ACXB12-00610	
	80	FLEXIBLE PIPE (L - TUBE)	1	CWH5850080	
	81	PACKING - L.TUBE	1	CWB81012	
	82	CONTROL BOARD COVER - PLATE	1	CWH131364	
	84	PANASONIC BADGE	1	CWE373439	
	85	BAG	1	CWG861154	
	86	BASE BOARD COMPLETE	1	CWG62C1081	
	87	SHOCK ABSORBER (L)	1	CWG712880	
	88	SHOCK ABSORBER (R)	1	CWG712879	
	89	C.C. CASE	1	CWG568361	

(Note)

- All parts are supplied from PAPAMY, Malaysia (Vendor Code: 00029488).
- "O" marked parts are recommended to be kept in stock.